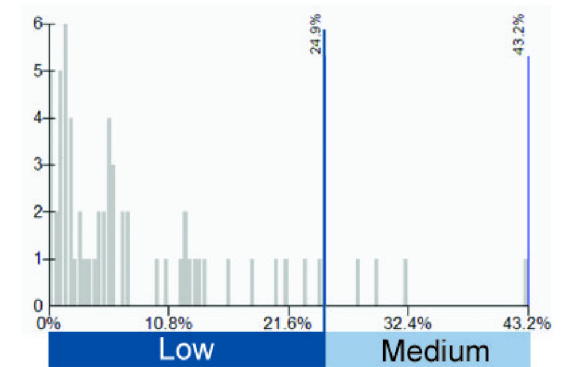


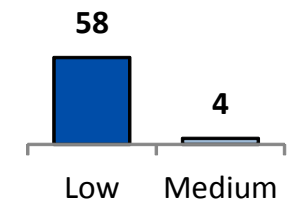
This map shows the percentage of jobs accessible within a 30 minute commute by public transit. It does not show how many people took public transit. The 30 minutes for commute is total travel time including walking to and from stops/stations and wait time at transfer points. All jobs are included except self-employment.

This map is based on results from the regional travel demand model of the Central Lane Metropolitan Planning Organization, and reflects conditions around January 2011. For this map, data was analyzed at the transportation analysis zone level then aggregated to the tract level. Information for the tracts that fall outside the Metropolitan Planning Organization area may be limited to transportation analysis zones within distance of the area boundary, and do not include data for the entire tract.

For this map, the data was classified with defined breaks of 0-24.9%, 25-49.9%, and 50% and over. This is the same classification as the other maps for job accessibility in 30 minutes for comparison purposes. A histogram is also included to show how the data is distributed across these three categories.



The chart below shows the number of tracts in the Metropolitan Planning Organization Area that have low, medium, and high percentages.



Map date: 12/18/13 Map data: Lane Council of Governments.  
 Caution: This map is based on imprecise source data, subject to change, and for general reference only.  
 The work that provided the basis for this map was supported by funding under an award with the U.S. Department of Housing and Urban Development. The substance and findings of the work are dedicated to the public. The author and publisher are solely responsible for the accuracy of the statements and interpretations contained in this publication. Such interpretations do not necessarily reflect the views of the Government.

- Census 2010 Tracts
- Bus Routes
- Metropolitan Planning Organization Area boundary
- Urban Growth Boundaries

### Percentage of Jobs Accessible within a 30 Minute Transit Commute

- Low: 0% - 24.9%
- Medium: 25% - 43.2%
- High: 49.9%-100% (Not on Map)
- No Jobs Accessible in Tract in 30 Minutes Transit Travel